

EBT Equipment Costs

Who pays what, when?

Jessica Owen Day USDA FNS National Office
Claire Brown USDA FNS Northeast Regional Office



Contents

- terminology
- visual format
- cost decision processes
- question opportunities

Terminology

- all costs
- ongoing maintenance/processing/operations
- implementation
- integrated
- multi-function♦
- necessary for participant access
- single-function♦
- stand-beside
- statewide EBT♦
- vendor♦

♦regulatory

Assumptions

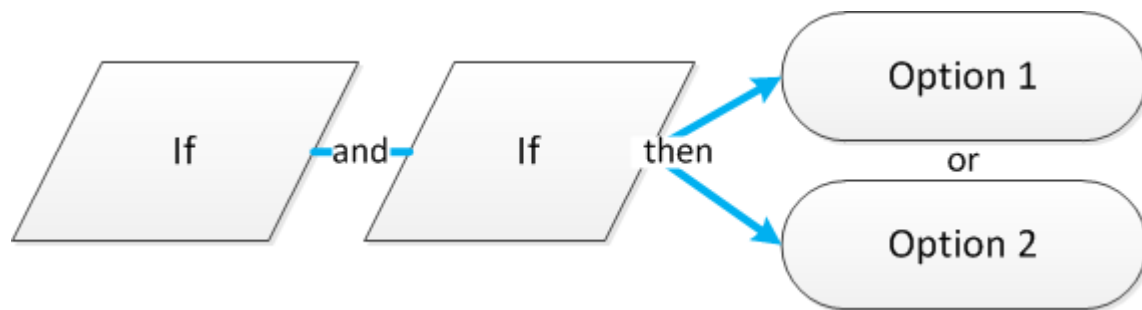
State Agency Practices

- assessment of necessary for participant access
- compliance with lane coverage formula

Vendors

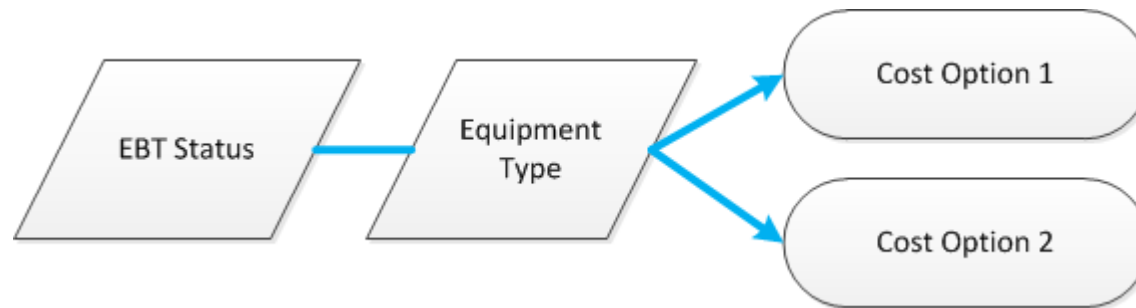
- implementation → authorized vendors
- statewide → vendor applicants

Implementation Model Format



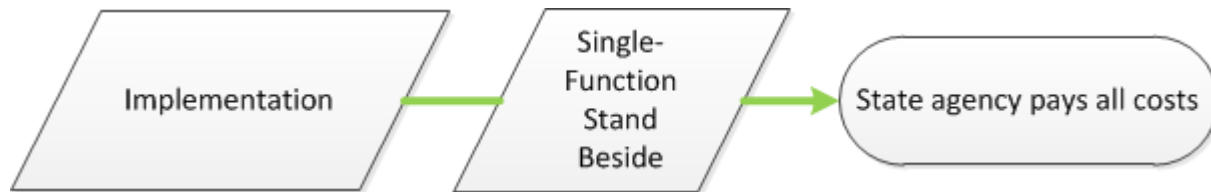
EBT Status

Equipment Type



Implementation Status

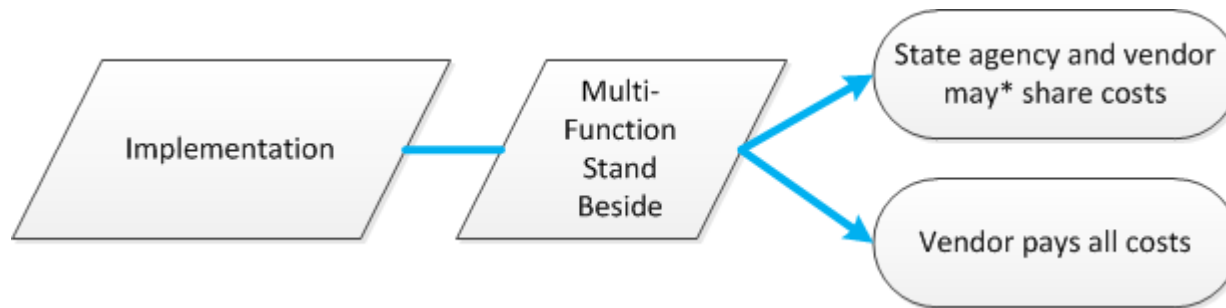
Single-Function Stand Beside



7 CFR 246.12 (aa)(1)
7 CFR 246.12 (aa)(4)(i)

Implementation Status

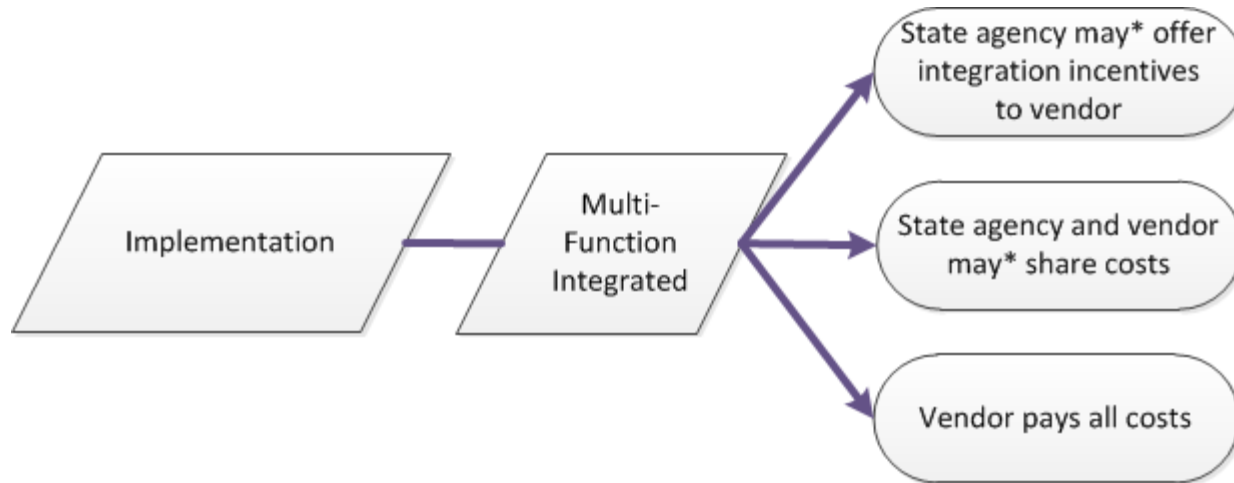
Multi-Function Stand Beside



7 CFR 246.12 (aa)(2)

Implementation Status

Multi-Function Integrated



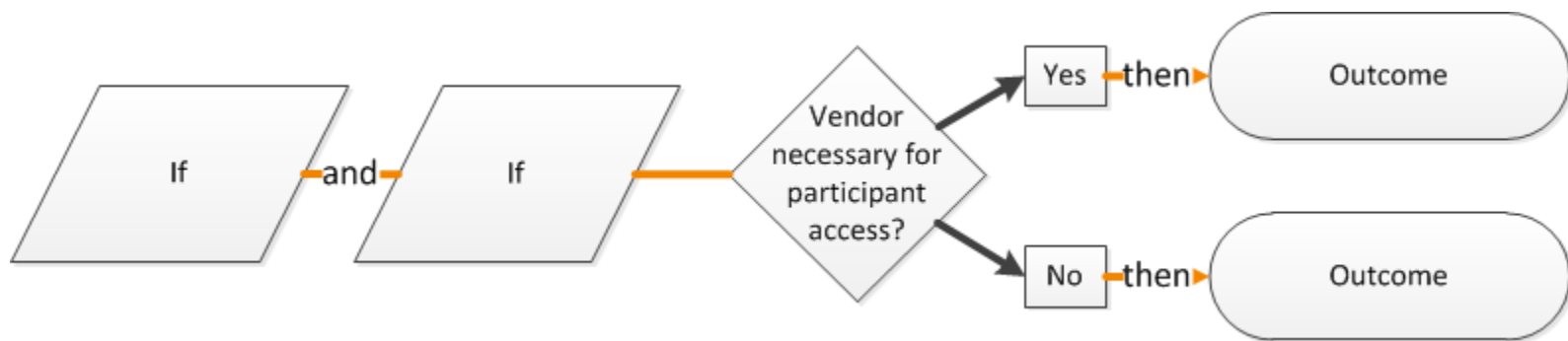
7 CFR 246.12 (aa)(2)

EBT Capability♦

7 CFR 246.12 (aa)(4)(ii)

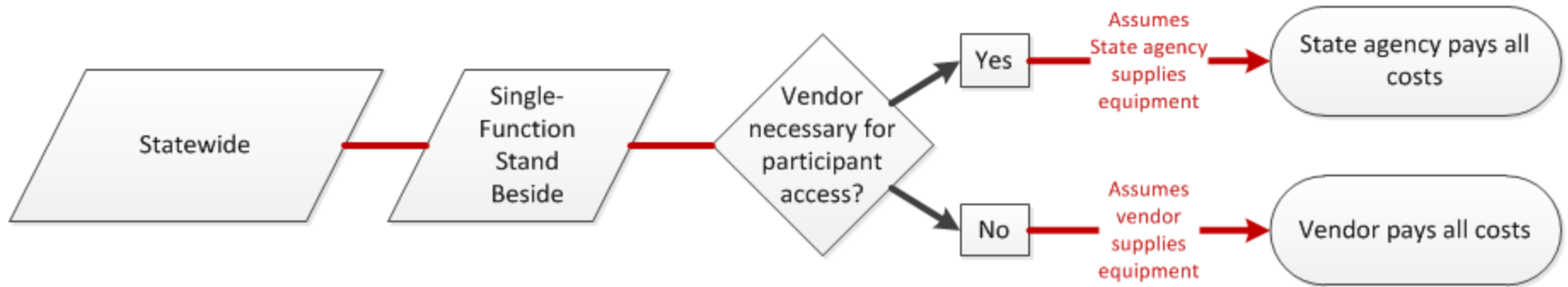
Statewide operations. After completion of statewide EBT implementation, the State agency shall not: Authorize a vendor, farmer, or farmers' market that cannot successfully demonstrate EBT capability in accordance with State agency requirements, unless the State agency determines the vendor is necessary for participant access.

Statewide Model Format



Statewide Status

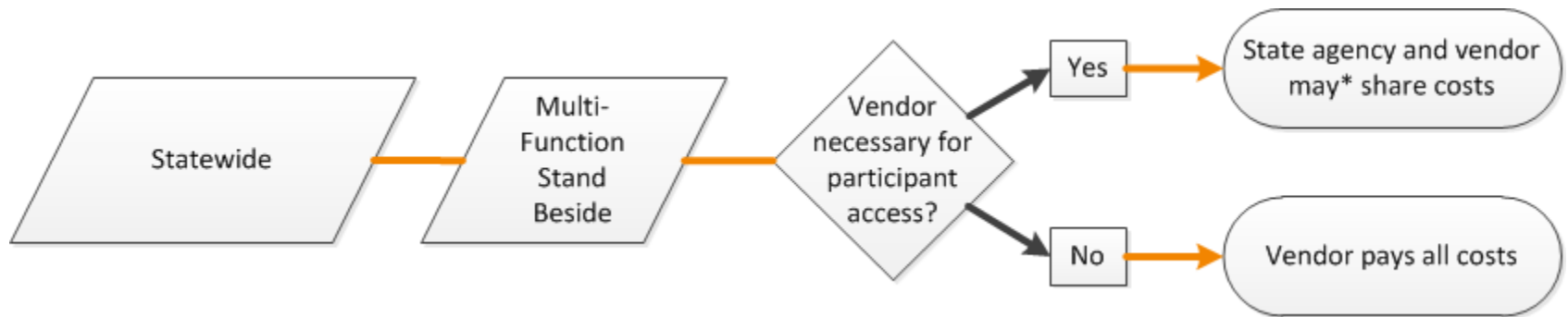
Single-Function Stand Beside



7 CFR 246.12 (h)(3)(xxx)

Statewide Status

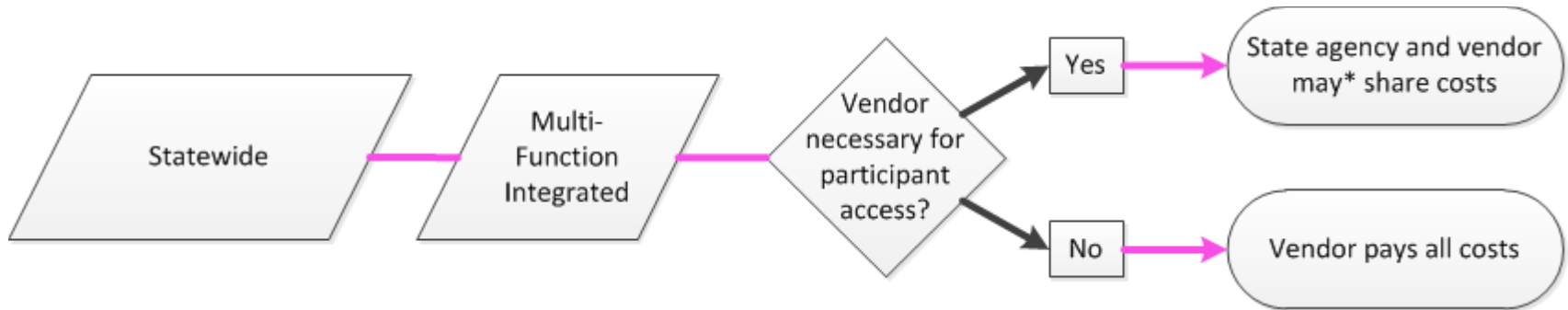
Multi-Function Stand Beside



7 CFR 246.12 (aa)(4)(i)

Statewide Status

Multi-Function Integrated



7 CFR 246.12 (aa)(4)(i)

Contact Information

Jessica Owen Day

WIC EBT Branch (WEB) Analyst

Claire Brown

Supplemental Food Programs Branch Specialist

WICEBTMIS@fns.usda.gov

