

APL CENTRAL

Novo Dia Group



AGENDA

- ▶ Key Challenges
- ▶ APL Central Overview
- ▶ Demonstration
- ▶ Questions/Answers



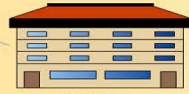
WIC AUTHORITY AND EBT KEY CHALLENGES

- ▶ Create and manage Authorized Product List (APL)
- ▶ Remote capturing of data and integration to a central location
- ▶ Manage Vendor and Manufacturer Product Updates
- ▶ Verify and monitor minimum stock verification and compliance
- ▶ Vendor certification and recertification
- ▶ Integrity of data and ability to export/import into other systems (MIS/EBT Processor)
- ▶ Scalability, integration and practical use of COTS

SAMPLE APL CENTRAL DEPLOYMENT



Manufacturer or Data Broker providing inputs to APLCentral.com



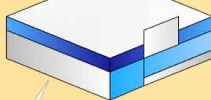
Outside Agency

National UPC database providing screened items for State to use

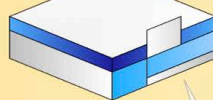


APLCentral.com

iDevices used for remote APL and Vendor Management



Retailer

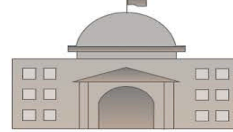


Retailer

Retailer sending new reuests or updated items to APLCentral.com

Retailer checking on status or certification

WIC MIS



State WIC Agency

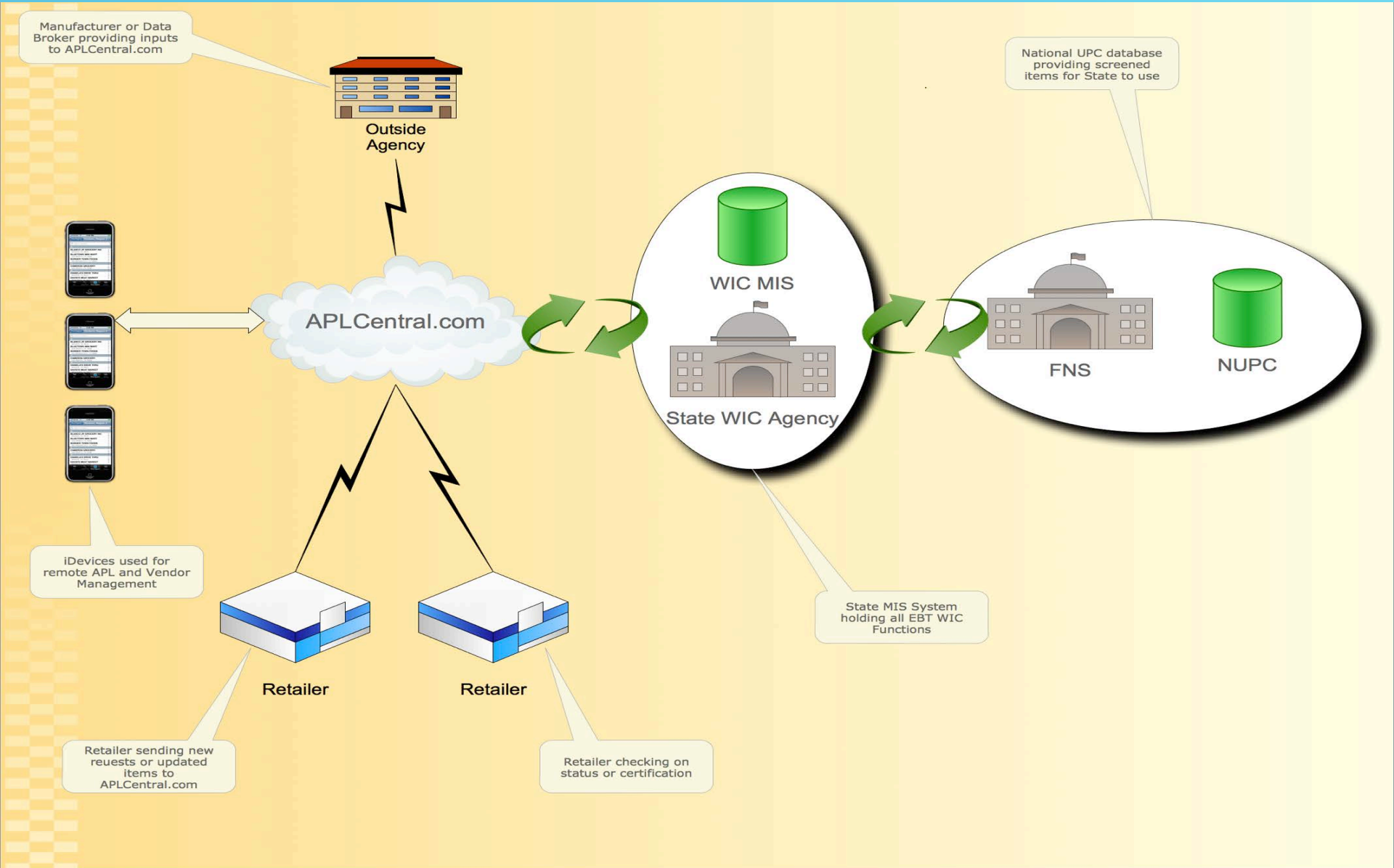
State MIS System holding all EBT WIC Functions



FNS



NUPC



APL CENTRAL OVERVIEW

- ▶ APL Central Interfaces

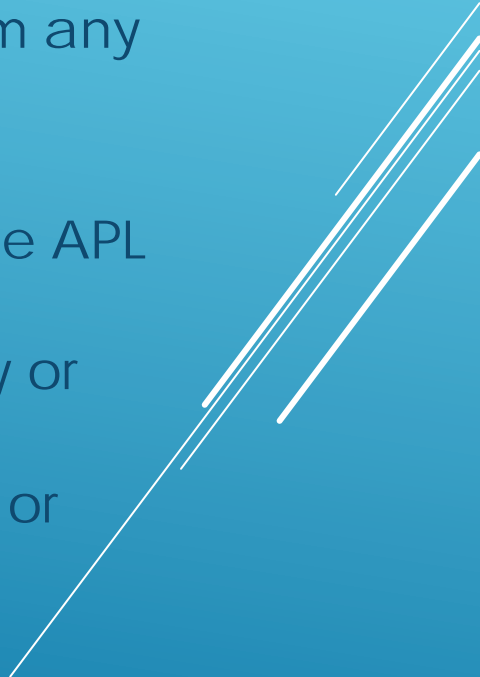
- ▶ Mobile App

- ▶ Works on iOS platform
 - ▶ Integrates to a Daily Systems iAps Reader for additional barcode scanning support
 - ▶ Ability to work with or without connectivity

- ▶ Website/Server

- ▶ Central repository for all APL central related data and activities
 - ▶ Secure and provides audit trail of all data and modifications
 - ▶ Deployed in Cloud
 - ▶ Interface for Vender requests (Item Modify / Update / Delete)
 - ▶ Real time synchronization and management of mobile devices

APL CENTRAL – MOBILE APP

- ▶ Mobile App
 - ▶ Flexible Integration
 - ▶ Connect directly to a central APL database with an idevice
 - ▶ Download and upload APL modifications from any location
 - ▶ Fast accurate and versatile APL management
 - ▶ Add or delete UPC's and PLU codes directly to the APL database
 - ▶ View associated UPC/PLU's by selected category or subcategory
 - ▶ Search for product verification by barcode, type or categories
 - ▶ Access vendor information according to name, location, peer group or other criteria
- 
- A decorative graphic consisting of several parallel white lines of varying lengths, slanted from the bottom right towards the top right, is positioned on the right side of the slide.

APL CENTRAL – MOBILE APP

- ▶ Access or modify data on specific vendors, products or other areas
- ▶ Scan barcodes with the iPhone camera
- ▶ Attach pictures of the products scanned using the iPhone camera
- ▶ Use iPhone camera and voice notes to support vendor management functions
- ▶ Take advantage of dynamic forms synchronized to the device for flexible use
- ▶ Provide users with a lightweight device
- ▶ Includes more functions than with dedicated, single-use devices

APL CENTRAL WEBSITE

- ▶ Website provides the following features
 - ▶ User administration and access to the Mobile App
 - ▶ Allows certain users to only have read only access
 - ▶ Device management – devices can be marked as lost/stolen as needed.
 - ▶ Real Time Data Synchronization between devices
 - ▶ Provide retailers with access to the website for UPC submission
 - ▶ State designated users can review, approve or deny requests online

APL CENTRAL – NEW FUNCTIONALITY

- ▶ Vendor Management Functions
 - ▶ Minimum Stock Verification
 - ▶ Dynamic Form Management for flexibility
 - ▶ Utilize Questions or checkboxes based on WIC authority requirements
 - ▶ Shelf Price collection
 - ▶ Simplify and guide the vendor analyst through their process
 - ▶ Eliminate Dual Entry

APL CENTRAL AND NUPC

	NUPC	APL Central
Mobile Capable		X
Nutrition Information	X	
APL File Generation	X	X
Vendor Interface	*	X

DEMONSTRATION

A decorative graphic consisting of several parallel white lines of varying thicknesses, slanted diagonally from the bottom-left towards the top-right, located in the lower right quadrant of the slide.

QUESTIONS AND ANSWERS

