

Predicting Issues in WIC

Douglas J. Besharov

University of Maryland

February 27, 2017

It's Jobs, Stupid!

- Tax reform
 - Corporate taxes (rates and profits parked abroad)
 - Individual income taxes
 - Maybe border adjustment tax
- Budget
 - Pressure on discretionary spending
 - Social Security and Medicare/Medicaid
 - State and local budget pressures
- Immigration
 - Wall? Workforce enforcement? Muslim ban?
 - Dreamers/DACA

How likely? I don't know . . .

but Wall Street is betting that Trump succeeds

It's Jobs, Stupid!

- **Tax reform**
 - Corporate taxes (rates and profits parked abroad)
 - Individual income taxes
 - Maybe border adjustment tax
- **Budget**
 - Pressure on discretionary spending
 - Social Security and Medicare/Medicaid
 - State and local budget pressures
- **Immigration**
 - Wall? Workforce enforcement? Muslim ban?
 - Dreamers/DACA

How likely? I don't know . . .

but Wall Street is betting that Trump succeeds

It's Jobs, Stupid!

- Tax reform
 - Corporate taxes (rates and profits parked abroad)
 - Individual income taxes
 - Maybe border adjustment tax
- Budget
 - Pressure on discretionary spending
 - Social Security and Medicare/Medicaid
 - State and local budget pressures
- Immigration
 - Wall? Workforce enforcement? Muslim ban?
 - Dreamers/DACA

How likely? I don't know . . .

but Wall Street is betting that Trump succeeds

It's Jobs, Stupid!

- Tax reform
 - Corporate taxes (rates and profits parked abroad)
 - Individual income taxes
 - Maybe border adjustment tax
- Budget
 - Pressure on discretionary spending
 - Social Security and Medicare/Medicaid
 - State and local budget pressures
- Immigration
 - Wall? Workforce enforcement? Muslim ban?
 - Dreamers/DACA

How likely? I don't know . . .

but Wall Street is betting that Trump succeeds

It's Jobs, Stupid!

- Tax reform
 - Corporate taxes (rates and profits parked abroad)
 - Individual income taxes
 - Maybe border adjustment tax
- Budget
 - Pressure on discretionary spending
 - Social Security and Medicare/Medicaid
 - State and local budget pressures
- Immigration
 - Wall? Workforce enforcement? Muslim ban?
 - Dreamers/DACA

How likely? I don't know . . .

but Wall Street is betting that Trump succeeds

Social Safety Net

- Social Security and Medicare
- Affordable Care Act
- Block granting Medicaid
- Mandated work activities
 - TANF!
 - SNAP?
 - Medicaid??
 - WIC???

What About WIC?

Findings from our report

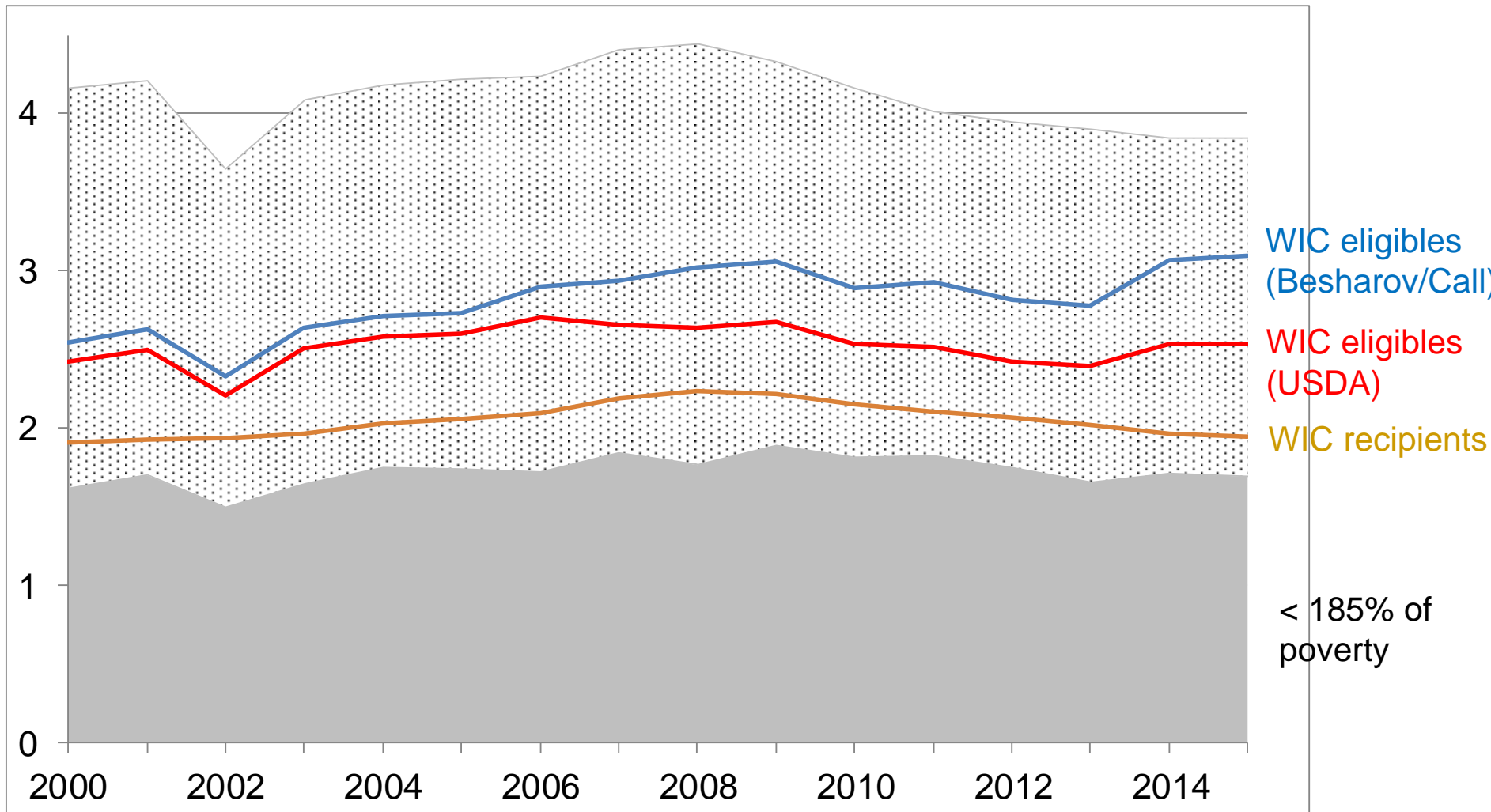
- Adjunctive eligibility: up to +40%
- Monthly income: up to +20%
- Certification periods: up to +30%
- Nutritional risk: up to +25%
- Cohabitators: up to +20%
- Unauthorized immigrants: up to ??%

All Infants

WIC Eligibility vs. Recipiency

(2014-2015 estimated)

Millions of infants



What About WIC?

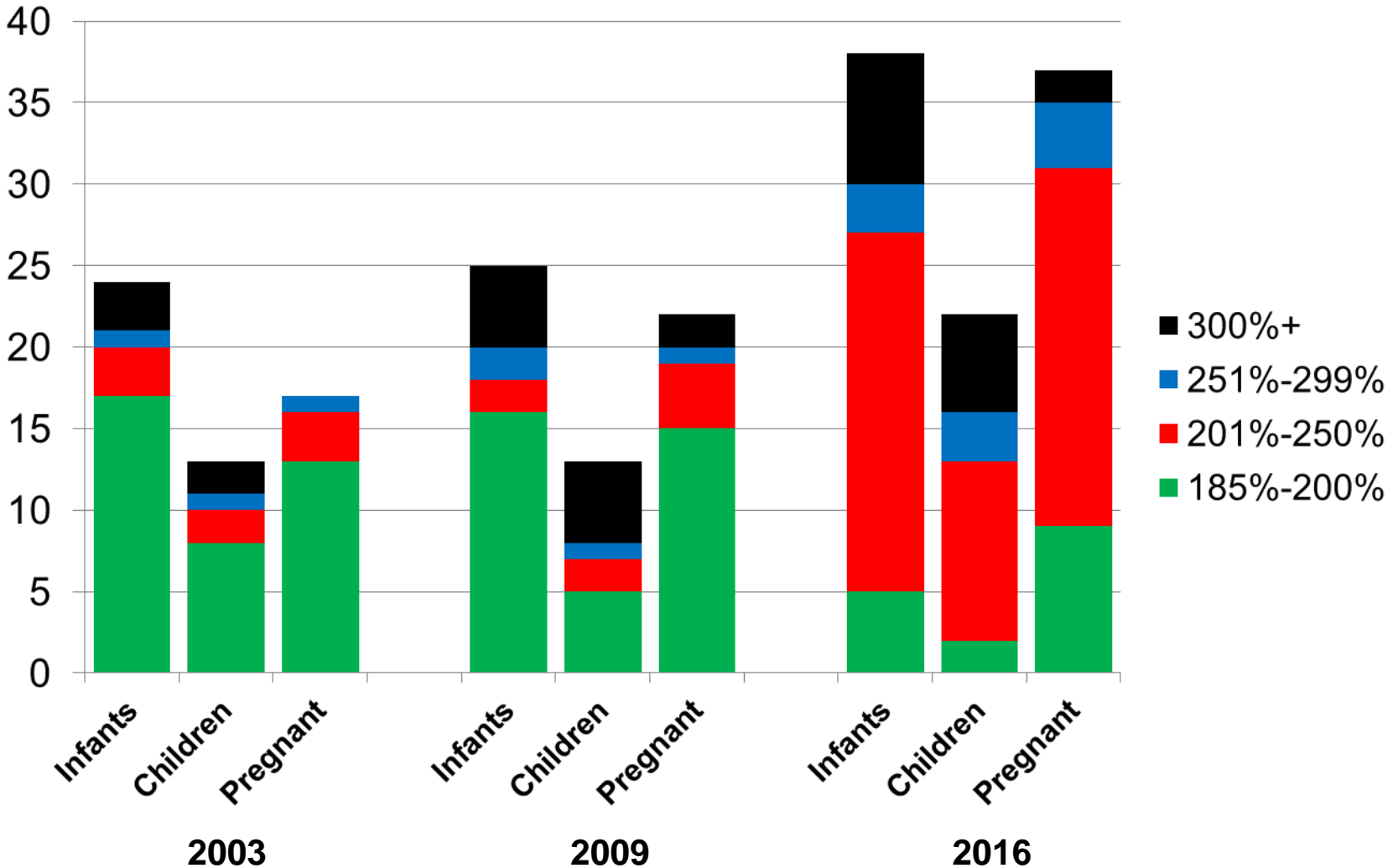
Findings from our report

- **Adjunctive eligibility: up to +40%**
- Monthly income: up to +20%
- Certification periods: up to +30%
- Nutritional risk: up to +25%
- Cohabitators: up to +20%
- Unauthorized immigrants: up to ??%

of States with Medicaid Income Eligibility above 185% of Poverty

2003, 2009, 2016

of states



What About WIC?

Findings from our report

- Adjunctive eligibility: up to +40%
- Monthly income: up to +20%
- Certification periods: up to +30%
- Nutritional risk: up to +25%
- Cohabitators: up to +20%
- Unauthorized immigrants: up to ??%

Murphy Brown

\$1 Million a year but no paid maternity leave



What About WIC?

Findings from our report

- Adjunctive eligibility: up to +40%
- Monthly income: up to +20%
- Certification periods: up to +30%
- Nutritional risk: up to +25%
- Cohabitators: up to +20%
- Unauthorized immigrants: up to ??%

What About WIC?

Findings from our report

- Adjunctive eligibility: up to +40%
- Monthly income: up to +20%
- Certification periods: up to +30%
- Nutritional risk: up to +25%
- Cohabitators: up to +20%
- Unauthorized immigrants: up to ??%

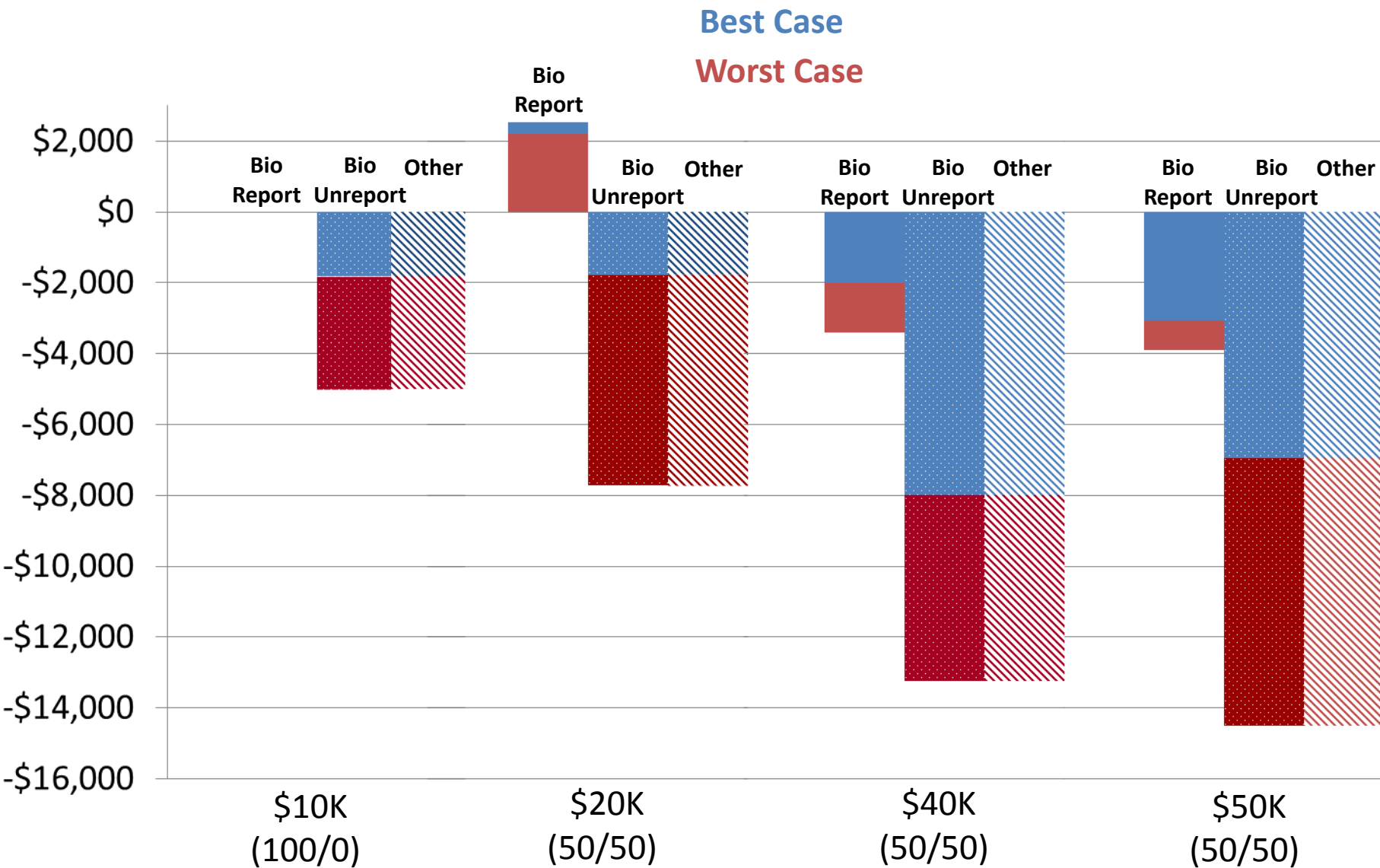
WIC Eligibility

Married vs. cohabiting couple

	Married Couple w/2 children	Cohabiting Couple w/2 children
Female income	\$30,000	\$30,000
Male income	\$70,000	\$70,000
Measured income for eligibility determination	\$100,000	\$30,000
Eligibility threshold (185% of poverty)	\$45,027	\$45,027
Eligible?	No	Yes

Effect of Marriage on Means-Tested Benefits

If the woman marries biological father of children vs. someone else



What About WIC?

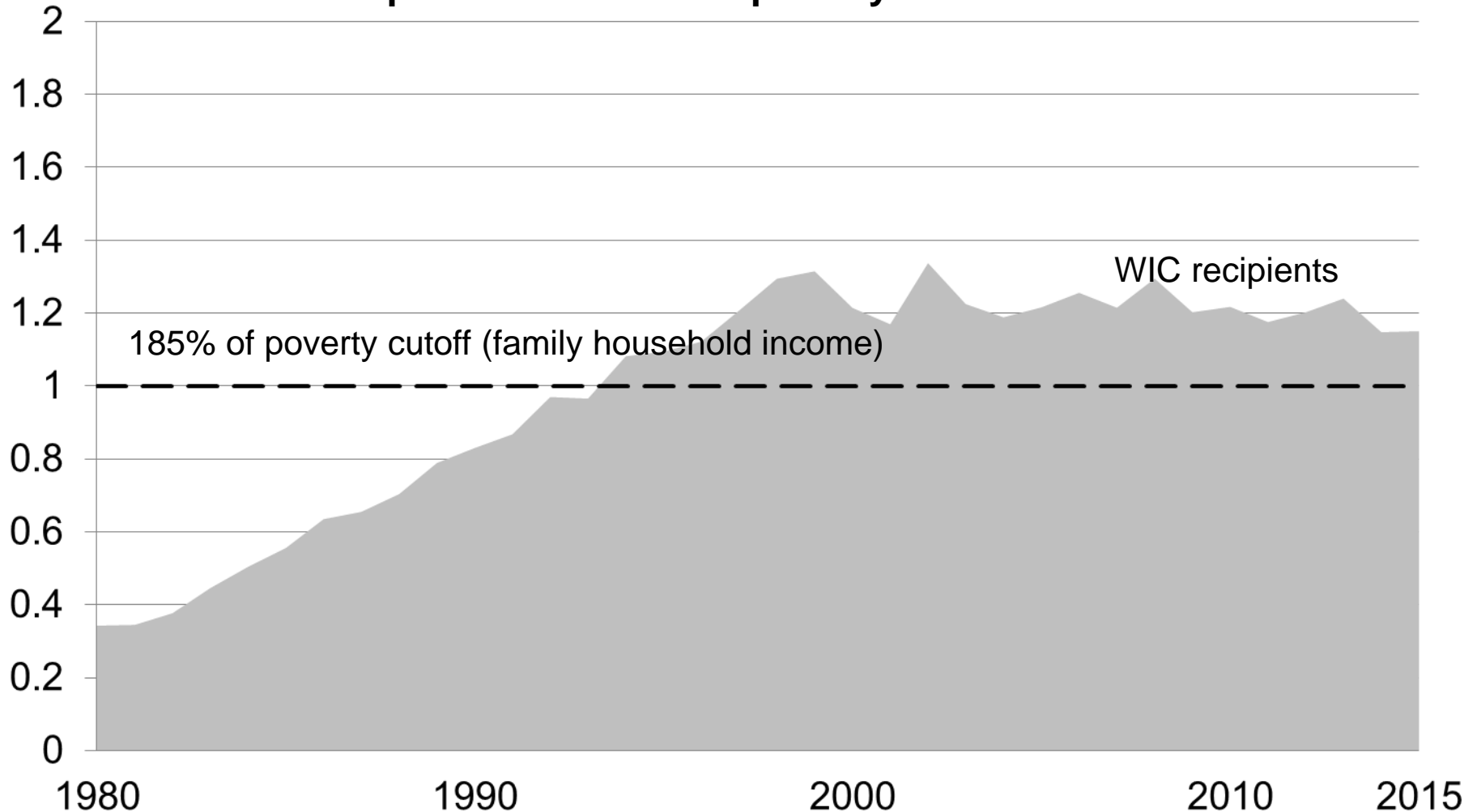
Findings from our report

- Adjunctive eligibility: up to +40%
- Monthly income: up to +20%
- Certification periods: up to +30%
- Nutritional risk: up to +25%
- Cohabitators: up to +20%
- Unauthorized immigrants: up to ??%

Ratio of Infants On WIC to # of Infants Below 185% of Poverty

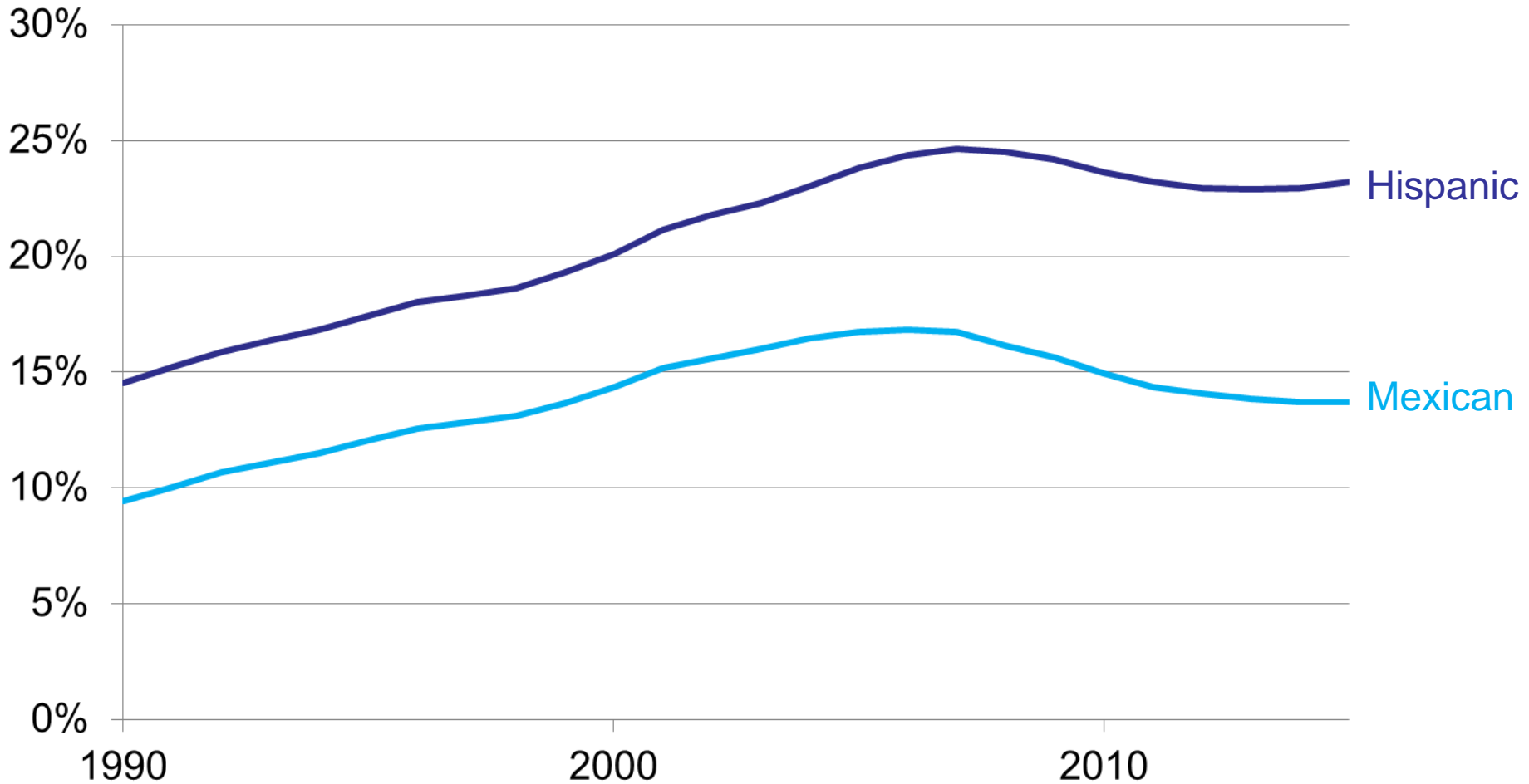
(2014-2015 estimated)

Ratio of WIC recipients to < 185% of poverty



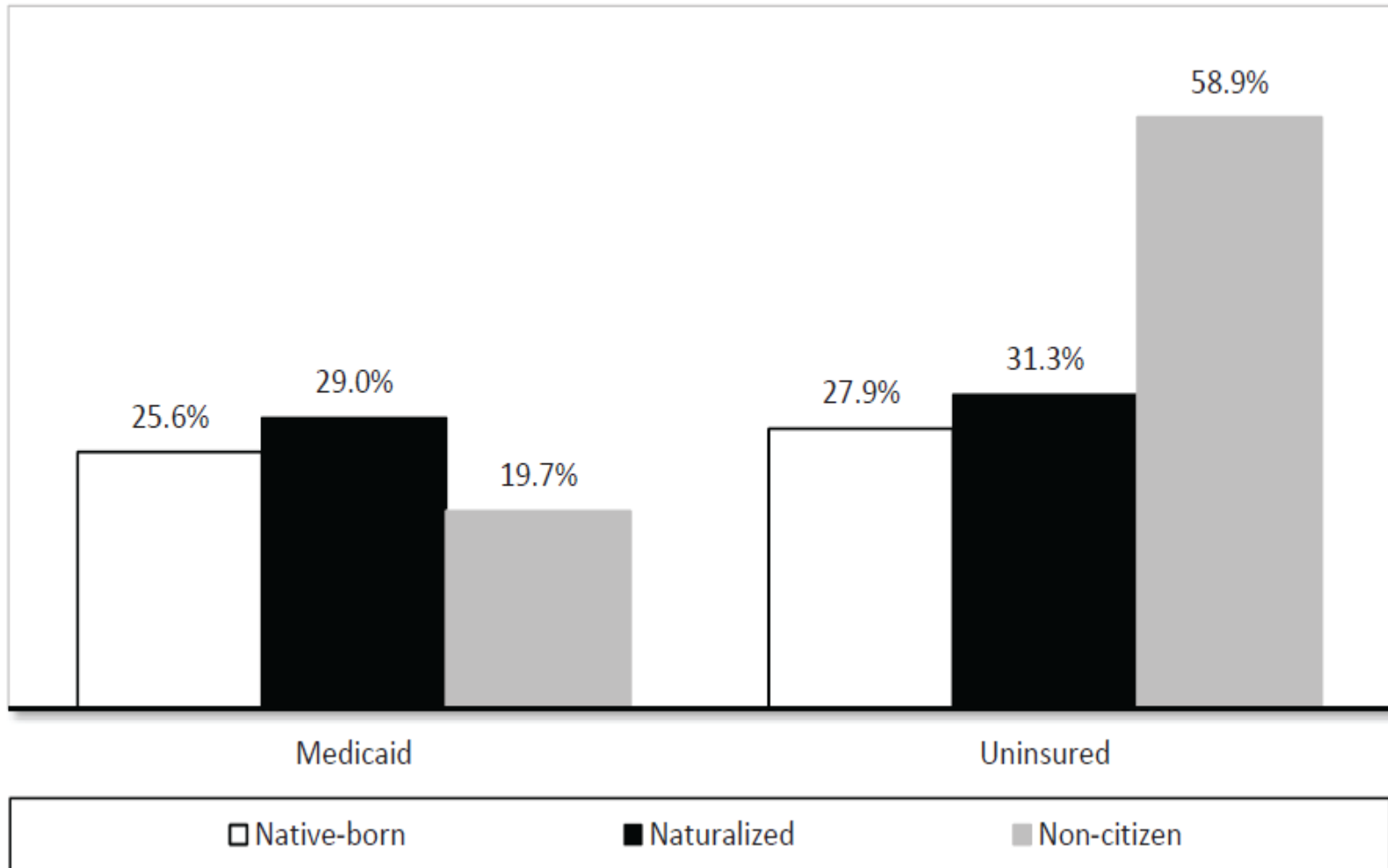
Increase in Percent of Hispanic Infants

1990-2015



Health Insurance Coverage for Low-Income Adults 19 or older, 2011

(Below 200 % of Poverty)



A Black Market?

☆ Similac Advance Formula 12 cans. 170S obo - S170 (Baltimore) 📍



make / manufacturer: **Similac advanced**

size / dimensions: **12.4 oz**

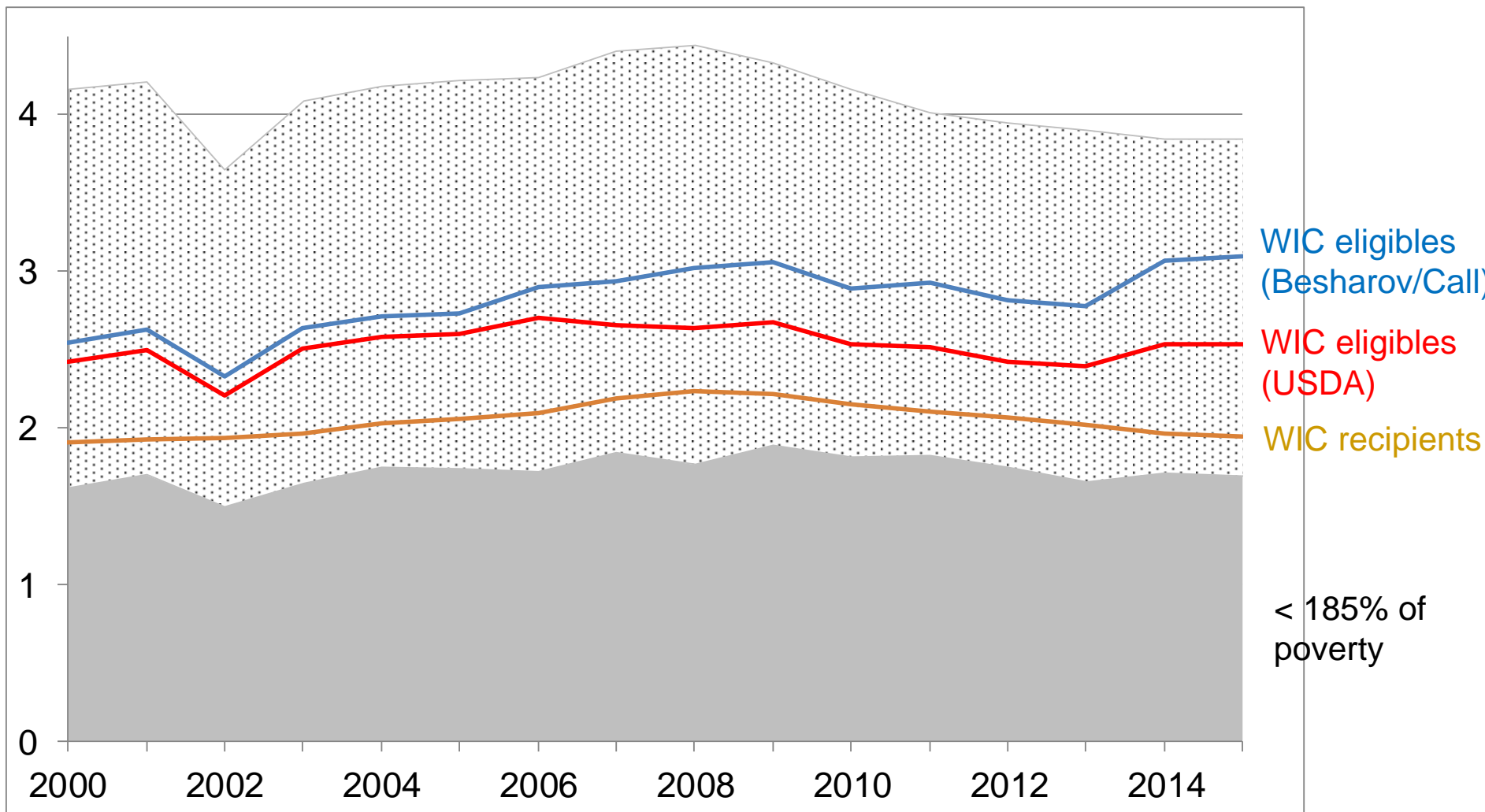
Everyone's asking if it's wic. No it's not. I work for my own. I bought this while pregnant because it was recommended to stock up before the baby comes. But he doesn't like this type.

All Infants

WIC Eligibility vs. Recipiency

(2014-2015 estimated)

Millions of infants



Main Points

- Much bigger forces at work
- Across the board discretionary cuts?
- Immigration
- Medicaid block grant vs. adjunctive eligibility
- Marriage penalties
- Changing economy

How likely? I don't know . . .

but we are in challenging times

WIC Eligibility

Married couple with one child and pregnant wife

	During pregnancy	At birth
Female income	\$50,000	\$0
Male income	\$70,000	\$70,000
Measured income for eligibility determination	\$120,000	\$70,000
Eligibility Threshold (185% of poverty)	\$45,027	\$45,027
Eligible at 185% of poverty (\$45,027)?	No	No
Eligible in 8 states at 300% of poverty (\$73,017)?	No	Yes

A Black Market?

☆ SIMILAC MILK BASED/POWDER - \$10



condition: new

I am selling 12.4 oz(352g) similac advance, complete nutrition for your baby's first year for only \$10

I have 10 box extra that I bought recently, the expiration date will be on 2020, and paid \$18 for each one with taxes , so do not miss this deal for your baby's first year formula (birth-12months)

if you are interested please feel free to contact me at [show contact info](#)

thanks for viewing